

**A
M
P
C
O**

INDEX COST

These indexes are comparison costs of material types used for toilet partitions. These prices do not reflect actual cost. For budget prices, please contact us at: info@ampco.com. For an actual quote, please fax your drawings and specifications to quotes@ampco.com or contact your local Ampco® distributor.

Estimates are FOB factory, unless otherwise noted. Indexes and prices may fluctuate and are subject to change. Index prices for each toilet compartment are based on overhead braced construction, High Pressure Laminate = 100.

Toilet Partitions

High Pressure Laminate	100
Powder Coated Baked Enamel	105
Quick 6™ High Pressure Laminate	105
Quick 6™ Phenolic	235
Solid Phenolic Core	235
Stainless Steel	245
Solid Plastic Polyethylene	250
Solid Phenolic with ABS edging	275
Evergreen™	265
Solid Surface	950

Euroline Toilet Partitions

High Pressure Laminate	200
Solid Phenolic Core	265
Solid Surface	1100



TABLE OF CONTENTS

INTRODUCTION.....	2
AMPCO LOCATIONS.....	3
QUICK SHIP PROGRAMS.....	4-5
CONSTRUCTION STYLES.....	6
EUROLINE.....	7
EVERGREEN™.....	8
HIGH PRESSURE LAMINATE.....	9
SOLID PHENOLIC CORE.....	10
PHENOLIC CORE WITH ABS EDGE.....	10
SOLID PLASTIC (HDPE).....	11
POWDER COATED (BAKED ENAMEL).....	12
STAINLESS STEEL.....	13
SOLID SURFACE.....	14
HARDWARE.....	15-19
CLEAN AND CARE.....	20-21
LEED CERTIFICATION.....	22
LEED TABLE.....	23-24

COST INDEX.....	FRONT COVER
NOTE FROM AMPCO.....	BACK COVER

This catalog is current as of May 2015 and accurately represents our products during this time. AMPCO reserves the right to modify or improve its products at any time. To acquire the most up-to-date information, please contact us:

T. 305.821.5700
E. info@ampco.com

For quotes contact:
E. quotes@ampco.com
Toll Free Fax. 866.216.5300

NOTE TO SPECIFIERS:

To learn more about AMPCO, please visit www.ampco.com. Our specifications are available by download at: www.ampco.com.

INTRODUCTION

About AMPCO®

AMPCO Products, LLC was incorporated in August 1961 with one manufacturing facility in Miami, Florida. We have grown steadily over the years and now we occupy over 160,000 square feet at our strategically located manufacturing locations in Florida, Texas and Washington State. AMPCO currently employs 120 team members.

We are the only toilet partition manufacturer in the United States with a full line of products and materials, all being high quality, innovative and affordable. Our products are manufactured to meet a variety of design needs via a wide selection of construction styles and materials. Our strength is providing engineered solutions for complex or specialized designs. We manufacture a full line of Toilet Partitions, using High Pressure Laminate, Phenolic Core, Evergreen, Solid Plastic (HDPE), Baked Enamel, Stainless Steel and Solid Surface materials.

Throughout the years our market offering has covered commercial Restroom Compartments, Vanities, High Pressure Laminate and Wood Veneer Door/Frame systems. We sell through a network of qualified distributors in North America and other countries around the world. In addition, we have manufacturing representatives promoting our products directly to specifiers and distributors. Quality products, reliable service and competitive prices have led to a steady growth in our production capabilities, modernization of our facilities and a professional team of personnel dedicated to satisfying the customers we are privileged to serve.

With a large inventory of stock material and several quick ship programs to offer, our products are always readily available. Additionally, our team of customer service professionals are always accessible and eager to provide superior product information and services as well as to assist throughout the design, purchase and delivery stages of any of our customer's projects.

Our Customer Service Promise to You

Customer service is one of the many consistent threads within AMPCO that encourages every customer to continue doing business with our company. The relationships we have carefully cultivated over the years are the lifeblood of our business and are what truly define AMPCO. Our goal is to be recognized by what we do, and therein resides the difference in the level of customer service AMPCO strives to be recognized for. It is AMPCO's human side of conducting business that captures and retains our customer's attention, respect and loyalty.

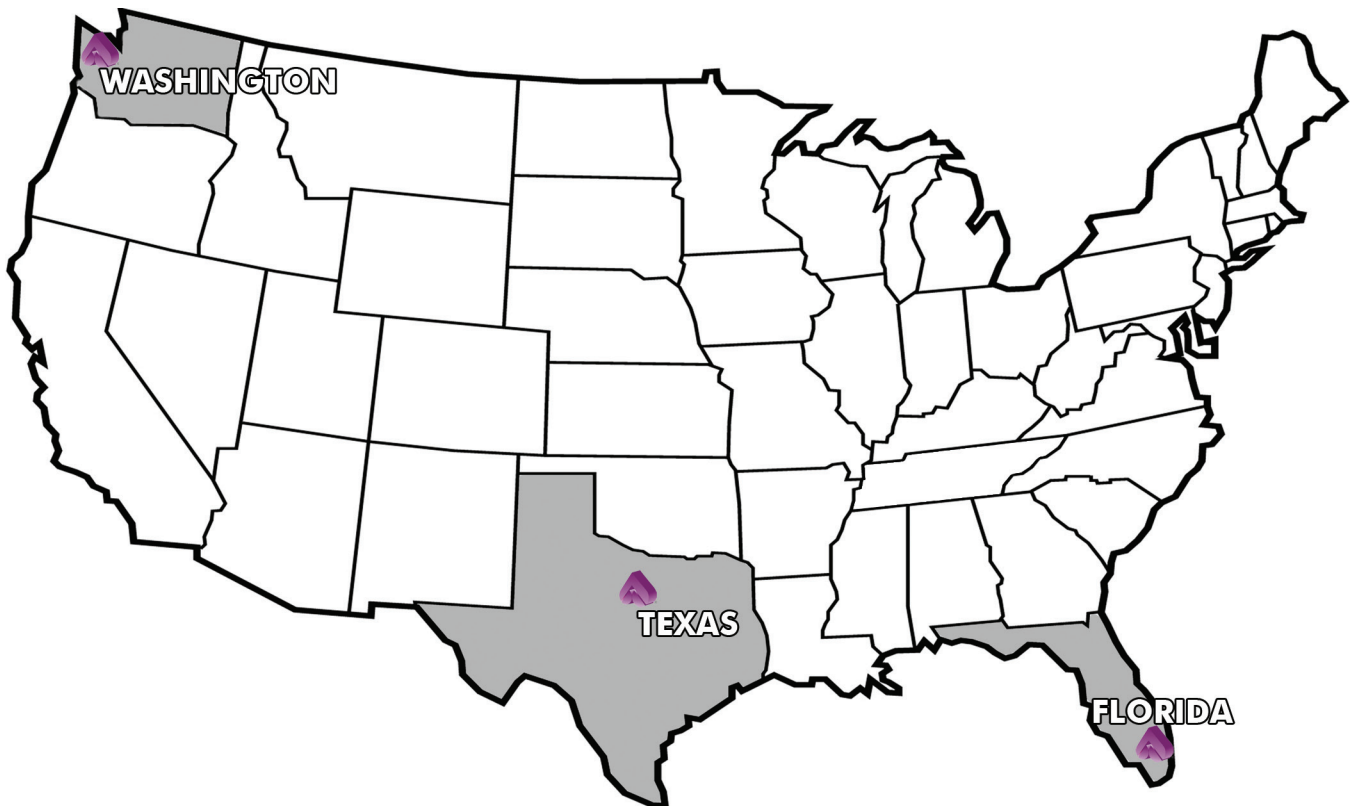
We are privileged to have employees who truly care and demonstrate a daily commitment to excellence. AMPCO employees strive to remain in regular contact with our customers and are encouraged to listen and respond appropriately to their needs while dedicating their efforts towards always providing the best possible solutions.

We thoroughly understand the power of saying "yes" to our customers, and this is why we are always looking for ways to better serve them. Providing quality service is our priority. It is our driving force to seek and achieve win-win scenarios for each of our valued customers.

AMPCO takes great pride in each of the products we manufacture for our customers because they are the best evidence of our dedication to excellence. We truly value our customer's business so we will always work hard to provide the highest quality products and services. This is our customer commitment to excellence!



OUR LOCATIONS



REGIONAL MANAGERS

Michael O'Neill
 Eastern Regional Manager
 11400 NW 36th Ave
 Miami, FL 33167
 T. 305.821.5700
 F. 305.507.1414
Michael.ONeill@ampco.com

Sean McFarlane
 Western Regional Manager
 4520 B Street NW
 Suite B
 Auburn, WA 98001
 T. 253.852.5900
 F. 253.856.2859
Sean.McFarlane@ampco.com

TERRITORY MANAGERS

Jason Boecklen
 Western
 4520 B Street NW
 Suite B
 Auburn, WA 98001
 C. 423.277.6312
 F. 253.856.2859
Jason.Boecklen@ampco.com

Jason DeMarchi
 Eastern
 11400 NW 36th Avenue
 Miami, FL 33167
 C. 305.455.5201
 F. 305.688.6191
Jason.DeMarchi@ampco.com

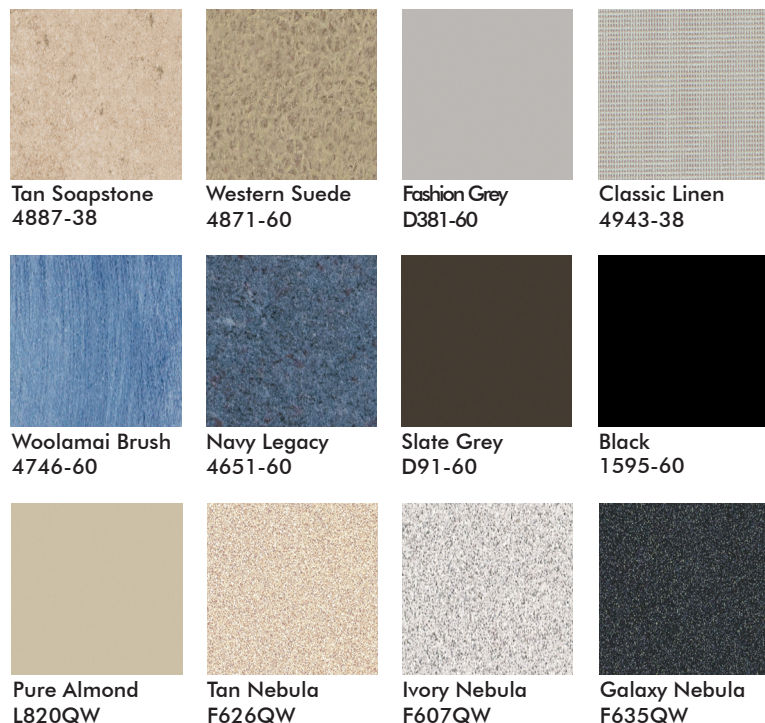
Renee Bacon
 South-Central
 201 Railroad Avenue
 Sanger, TX 76266
 C. 305.455.5202
 F. 940.458.3637
Renee.Bacon@ampco.com

QUICK SHIP PROGRAMS

We've been building superior, quality products since 1961 and getting them to you FAST is our specialty! Our express ship programs offer quick turnaround times. AMPCO delivers your compartments FAST where and when you need them. Please call the factory to obtain available colors and materials with the quickest turnaround time.

Express Ship in Phenolic Core Program

Our Express Ship Program offers overhead braced Phenolic core toilet partitions in two weeks or less.



For samples call 1.800.433.3222 or order online at www.wilsonart.com You can also contact Ampco by calling or emailing info@ampco.com
Wilsonart and Wilsonart logo are registered trademarks of Wilsonart International Holdings LLC.

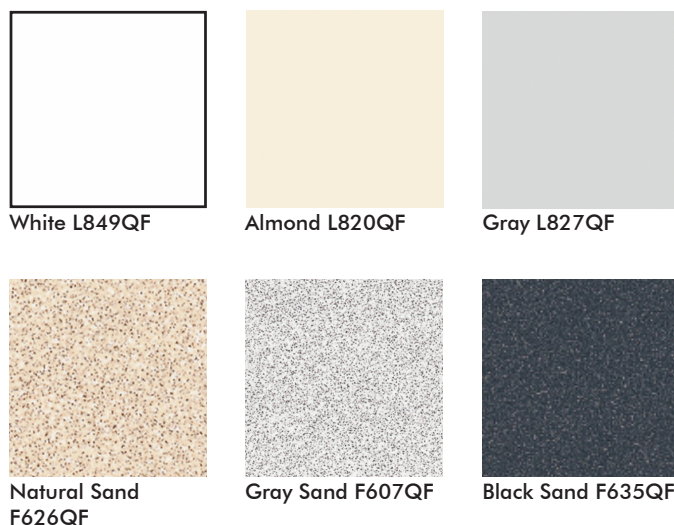
Quick 6™ Program

Immediate delivery, Immediate savings, Immediate value!

AMPCO's most popular quick ship program

- Available in 6 High Pressure Laminate colors: White, Almond, Gray, Natural Sand, Grey Sand, and Black Sand.
- Overhead braced toilet partitions (other construction styles available)
- Premium Quartz Finish

All standard sizes in stock at Ampco Florida, Ampco Texas and Ampco Washington.



This color selector contains computer printed representations. Refer to actual product samples to confirm your selection. Express Programs require an upcharge.

Manufactured to Ampco's Standard High Pressure Laminate Technical Specifications. Quick 6™ laminates are NEMA Grade GP-50, 0.050" (1.2mm) thick with special graffiti resistant quartz finish.

QUICK SHIP PROGRAMS

AMPCO representatives are ready to provide you with complete information on our products and services as well as assist you through the design, purchase and delivery stages of your order. We work very closely with our customers to communicate lead times based on approval of shop drawings, field dimensions, and color selection.

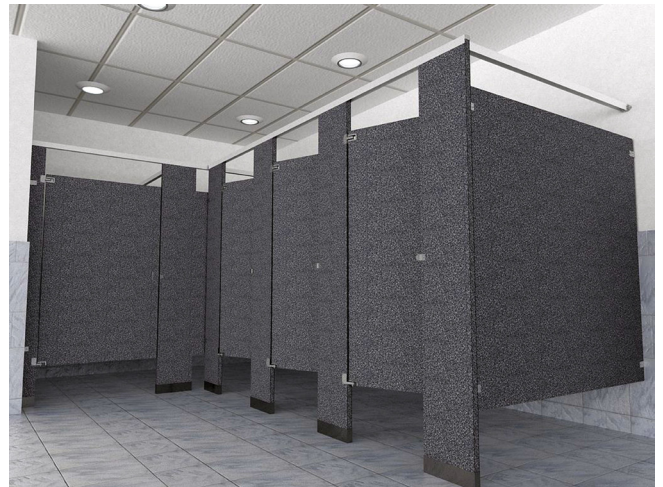
** Programs are subject to factory availability. Please contact your local factory to verify lead times and availability.*

2 Day Ship Program

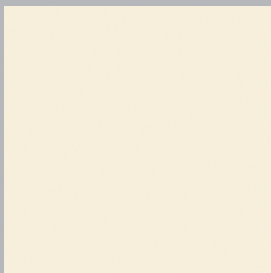
Overhead Braced, High Pressure Laminate compartments ships in 2 days.

Program Includes:

- Overhead braced
- General purpose grade High Pressure Laminate
- 1 1/4" (31mm) thick pilasters
- 1" nominal (7/8" thick) (22mm) doors, panels and screens
- Heavy duty cast chrome plated non-ferrous Zamac hinge and bracket hardware are standard
- High Pressure Laminate bonded with structural water resistant adhesives to industrial grade particle board
- 7 stalls or less



4 Colors to choose from:



Almond L820QF



Natural Sand
F626QF



Gray Sand F607QF



Black Sand F635QF

For samples contact Ampco at 305.821.5700 or email info@ampco.com

This color selector contains computer printed representations. Refer to actual product samples to confirm your selection. Express Programs require an upcharge.

For more information or to obtain an AMPCO order form please contact any AMPCO location.

CONSTRUCTION STYLES

Standard Compartment Styles



FLOOR MOUNTED

Floor mounted compartments are recommended where ceiling heights make installation of ceiling supported compartments impractical and where overhead bracing is not required.



CEILING SUPPORTED

Ceiling supported compartments are favored installations in construction with drop ceilings or span type ceiling systems. Ampco's ceiling supported compartments also offer unobstructed floor surface for easy maintenance.



OVERHEAD BRACED

Overhead braced compartments are recommended where structural rigidity is a necessity, especially where building construction and high ceilings prevent other types of installations.



FLOOR TO CEILING

Floor to ceiling supported compartments are a popular Ampco® solution providing a sturdy installation. Mounting at the floor and ceiling eliminates the need for overhead bracing without sacrificing the rigidity and strength of the restroom compartments.

CONSTRUCTION STYLES

No-Sight Line Construction Style

EUROLINE™

Ampco Euroline™ restroom compartments offer unsurpassed security and privacy achieved with a 6 inch (150 mm) floor clearance and a door mounting system that eliminates see-thru gaps. Euroline is available in High Pressure Laminate, Solid Phenolic Core, Evergreen and Solid Surface.

Hardware Considerations

All components are constructed of heavy duty aluminum, finished with an attractive and durable powder coating process. Tamper resistant fittings and nylon bearings provide corrosion resistance. Hardware is blister packed to provide easy on-site storage, identification and installation.

Durability

The Euroline HPL Compartments are faced with high pressure laminate on all surfaces, and the Phenolic range is constructed for an even greater resistance to impact and high humidity levels. Evergreen material is solid color throughout, and highly recommended for damp areas. Solid Surface material is impervious to water, moisture and heat. They offer practical elegance and repairability. All systems provide strong tamper-proof, corrosion resistant hardware.

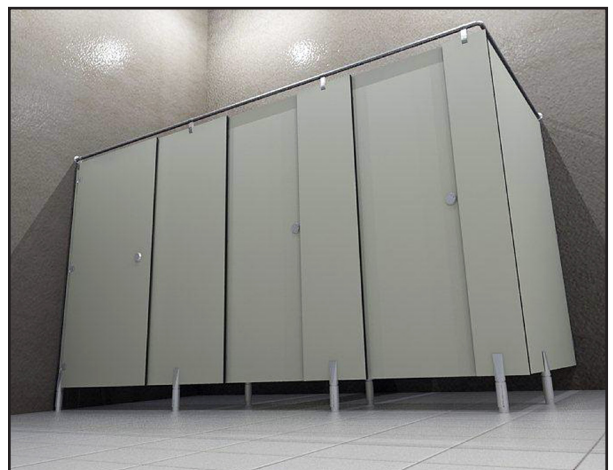
Available in two unique construction styles:



The Euroline Classic compartments system is an unframed system with a clean look on the top line with concealed angle bracing mounted to infill panels of the same material between door openings.



The Euroline METRO compartment system utilizes a satin finished aluminum tubing anchored to the top of each stile and braced to all walls with hardware of the same finish. The system would be considered when applications require increased structure and stability, but aesthetic lines and looks are demanded.



EVERGREEN™

Evergreen face sheets are bonded under heat and high pressure to phenolic resin-impregnated kraft paper sheets. All exposed edge compartments are solid color throughout, chamfered and free of milling marks. Popular in high traffic public buildings, schools and institutional facilities. Evergreen is virtually indestructible, has a graffiti resistant finish and is suitable for wet or high moisture environments.



CONSTRUCTION FEATURES:

- 3/4" (19mm) stiles and doors
- 1/2" (12mm) thick panels and urinal screens
- Class B Fire Rating ASTM E84

OPTIONAL FEATURES:

- Euroline hardware
- Optional 3/4" (19mm) thick panels/screens
- Class A Fire Rating ASTM E84

SPECIAL FEATURES:

- Non-ghosting graffiti removal
- Water Resistant
- Solid color throughout
- Stainless steel hardware
- Furnished hardware to comply with ANSI A117 and Title 1-"T" of the Americans with Disabilities Act (ADA)
- 6 earth tone colors
- 25 year limited warranty
- Euroline™ hardware (See page 17)

STRENGTHS

- Durable Material
- Good Moisture Resistance
- Solid Color Throughout

**Slight material color variations will exist from batch to batch.*

HIGH PRESSURE LAMINATE

Ampco® High Pressure Laminate compartment systems are the most popular specification, especially when a design requires flexibility, aesthetics, and economy.

Ampco's High Pressure Laminate components utilize NEMA GP-50 high pressure laminate and industrial grade 45lb. density particleboard. Bonding the edges before face laminate promotes water runoff, enhances color pattern aesthetics and inhibits deterioration.

*Ampco features a full range of solid designer colors, patterns and finishes.

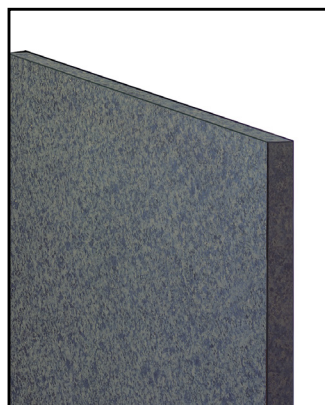
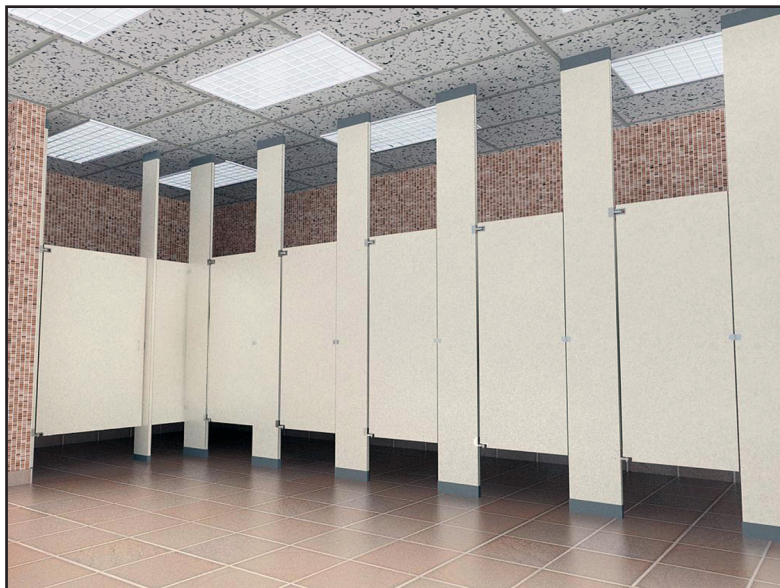


CONSTRUCTION FEATURES:

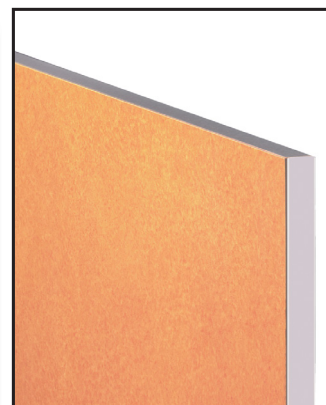
- 1-1/4" (31mm) thick stiles
- 1" (7/8"- 22mm) nominal thick doors, panels and screens
- Heavy duty cast chrome plated non-ferrous Zamac hinges and bracket hardware are standard
- High Pressure Laminate bonded with structural water resistant adhesives.

OPTIONAL FEATURES:

- 1" minimum (25mm) thick finished doors, panels and screens
- Plywood core, AB exterior grade
- Stainless Steel finished edges on doors, panels, stiles and screens
- Steel core stile
- Stainless Steel hardware
- Continuous aluminum or stainless steel wall brackets
- Continuous stainless steel cam hinges or three hinges per door
- Continuous aluminum spring hinge
- 25 year warranty
- Euroline™ hardware (See page 17)



High Pressure Laminate



High Pressure Laminate with Stainless Steel laminate edges

STRENGTHS

- Economically Priced
- Quick Ship Availability
- Large Color Selection
- High Graffiti Resistance
- Impact Resistance
- 2 Day Ship Program

SOLID PHENOLIC CORE

Ampco's Solid Phenolic compartment systems provide the best value available with strength, durability, color, finish selection, and design flexibility.

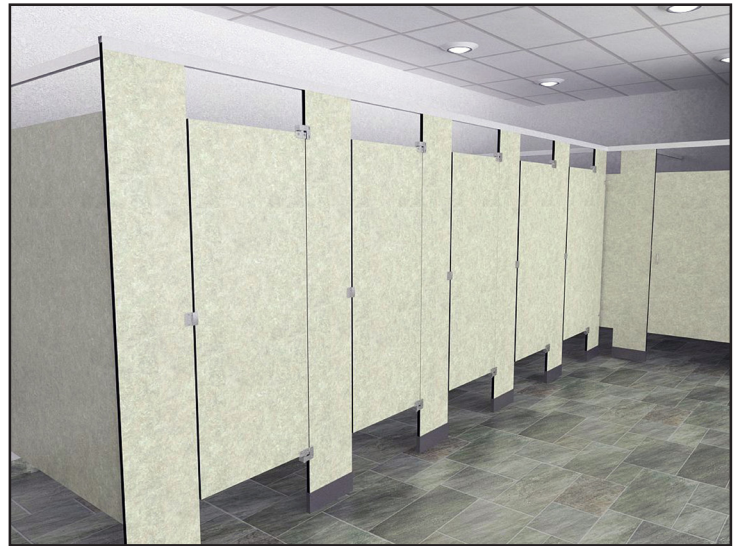
For high traffic public buildings, schools, and institutional facilities. A virtually indestructible core makes it suitable for wet areas.

CONSTRUCTION FEATURES:

- 3/4" (19mm) thick stiles and doors
- 1/2" (12mm) thick panels and screens
- Heavy duty cast stainless steel door hardware and stamped stainless steel bracket hardware
- Polished black edges
- Class B fire rating

OPTIONAL FEATURES:

- 1" (25mm) thick stiles
- Continuous stainless steel hinge or three hinges per door
- Continuous Aluminum spring hinge
- Continuous stainless steel or aluminum wall brackets
- Euroline™ hardware (See page 17)
- Class A fire rating



STRENGTHS

- Durable Material
- Good Moisture Resistance
- Extensive Color Selection
- Heat and Wear Resistant
- Lightweight

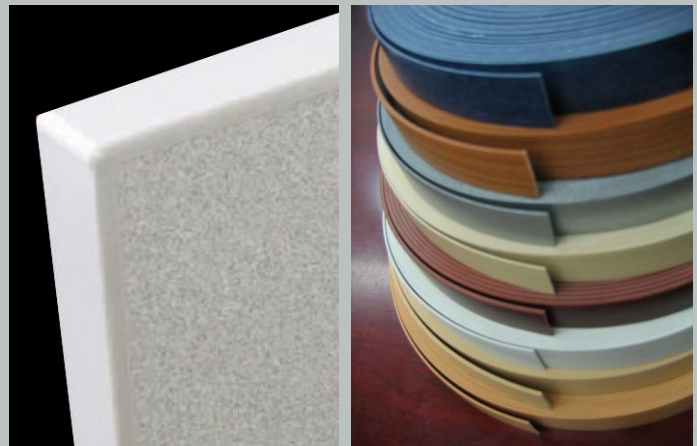


PHENOLIC CORE WITH ABS EDGING

With Ampco's 1 mm ABS edge tape, you can color-match your component edging with the corresponding surface. The tape is structurally bonded to the phenolic core material.

Choose from an array of colors and patterns to enhance your overall design aesthetic. Apart from simply being pleasing to the eye, the tape provides superior edge protection.

Solid phenolic core toilet partition material and 1 mm ABS edge tape provides the best value for your system and specifications.



SOLID PLASTIC (HDPE)

Ampco's solid plastic high density polyethylene compartment systems utilize the latest technological polymer resin composition. Recommended for parks, schools, recreational facilities, and high traffic locations.

- Water and graffiti resistant
- Virtually maintenance-free
- Will not delaminate or oxidize
- Impact and wear resistant



STRENGTHS

- Durable Material
- Good Moisture Resistance
- No Delamination
- Solid Color Throughout

CONSTRUCTION FEATURES:

- 1" (25mm) nominal thick doors and panels
- Clear satin anodized aluminum hardware
- Graffiti resistant textured surface
- Solid color throughout

OPTIONAL FEATURES:

- Class A and Class B Fire Rating
- 100% Post Consumer¹
- Continuous stainless steel brackets and/or hinges
- Vinyl plastic continuous brackets and/or shoes
- Continuous aluminum spring hinge
- Continuous aluminum wall brackets
- Double height aluminum wall brackets
- Stainless Steel hardware
- Aluminum heat sink mounted on bottom of doors and panels

¹Call for lead times and available colors.

**Slight material color variations will exist from batch to batch.*

POWDER COATED STEEL (BAKED ENAMEL)



Ampco® Powder Coated Baked Enamel Steel Compartment Systems are economical and long lasting. Ampco's baked enamel system provides the toughest paint finish in the industry as measured by ASTM standards for salt spray, humidity and impact. Rounded stile and door edges provide a soft relief and prevent edge chipping.

STRENGTHS

- Durable Material
- Economically Priced
- Wide Variety of Colors
- Good Impact Resistance

OPTIONAL FEATURES:

- Continuous aluminum or stainless steel hinge
- Cast stainless steel hardware
- Stamped Stainless Steel stirrup brackets
- Continuous stainless steel or aluminum wall bracket

CONSTRUCTION FEATURES:

- 1" (25 mm) thick door and panel
- 1-1/4" (32 mm) thick pilaster
- Cast chrome plated non-ferrous Zamac hardware
- All corners welded for strength, rigidity and longevity

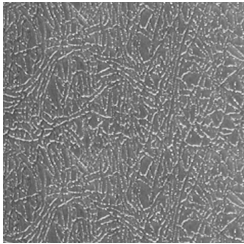


STAINLESS STEEL

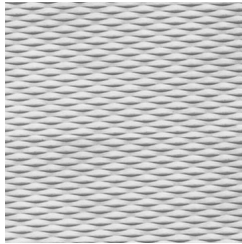


Ampco's stainless steel compartment systems are considered the finest in the industry. Excellent for installations where appearance and strength are prime considerations. Soft brushed satin, welded corners stainless steel material has soft radius edges on doors, panels, screens and stiles. Ampco's superior design imparts a visual beauty unmatched by any other system. Recommended for high humidity applications. Shipped with protective PVC film which is easily removed after installation.

STAINLESS STEEL PREMIUM FINISH



Leather Grain

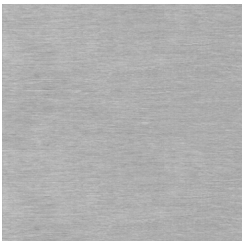


5WL



Random Swirl

STAINLESS STEEL STANDARD FINISH



Brushed Stainless

STRENGTHS

- Durable Material
- Economically Priced
- Good Impact Resistance

CONSTRUCTION FEATURES:

- 1" (25 mm) thick door and panel
- 1-1/4" (32 mm) thick pilaster
- Heavy duty cast chrome plated non-ferrous Zamac hardware
- All corners welded for strength, rigidity and longevity

OPTIONAL FEATURES:

- Continuous aluminum adjustable hinge
- Cast stainless steel hardware
- Continuous stainless steel or aluminum wall bracket
- Continuous stainless steel hinge
- 5WL textured, Random Swirl and Leather Grain finishes available

SOLID SURFACE

Ampco® solid surface compartment systems are perfect applications where practical elegance, rugged durability, and ease of maintenance are important considerations. Luxurious colors and patterns throughout the material thickness offer the added advantage of easy on-site repair. Impervious to water, moisture and heat. Features a Class "A" fire rating.

Solid Surface contributes to sustainable building design. It has exceptional durability and extended life cycles, offering a beautiful and cost-effective surface with the added value of reduced waste.

Nontoxic and non allergic. Material has natural anti-microbial features.

Its nonporous, and with proper cleaning it does not support the growth of mold, mildew, and bacteria, which makes it an excellent option for hospitals, hotels and restaurants.

CONSTRUCTION FEATURES:

- Heavy Duty 3 surface mounted cast Stainless Steel hinges
- Stainless Steel hardware
- 1/2 "(13 mm) door thickness with 3" (76 mm) reinforcement on hinge and lock side
- 1/2" (13 mm) thick panels
- 1" (25 mm) thick pilasters

OPTIONAL FEATURES:

- Euroline Hardware
- 1/2" (13 mm) thick doors
- 3/4" (19 mm) thick panels and pilasters
- Solid Surface shoes and vanity top units to match with partitions and washroom areas
- Continuous Stainless Steel wall brackets and hinges
- Concealed hardware
- Special hardware and construction upon request



Notes on Solid Surface:

If a toilet partition is damaged by graffiti, the surface can be renewed. If the product is damaged by etching or deep scratches, the damaged area can be repaired. Most can be brought back to their original look with minimum effort and expense.

Construction Types:

Solid Surface toilet partitions can be constructed in Overhead Braced, Floor to Ceiling, Ceiling Hung and Euroline.

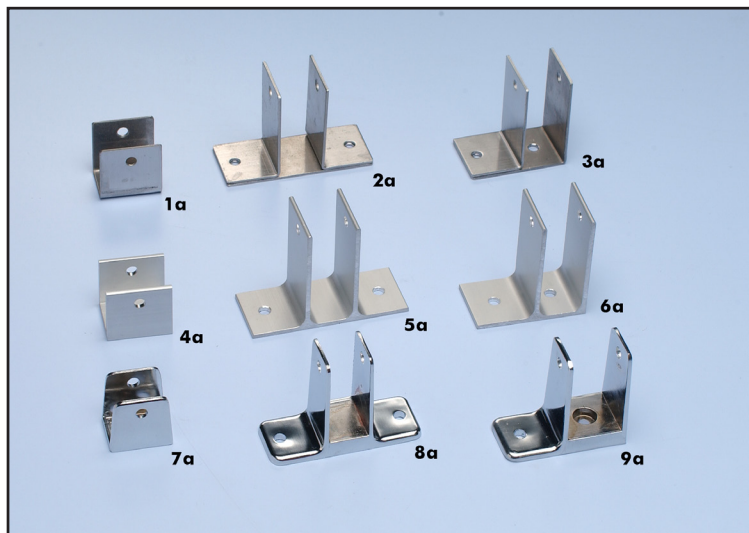
Exclusive Design: Ceiling Hung

Ceiling Hung toilet partitions are constructed with 1" stiles and 1/2" doors and panels. It is mandatory to use solid surface shoes and continuous "U" brackets at all locations.

STRENGTHS

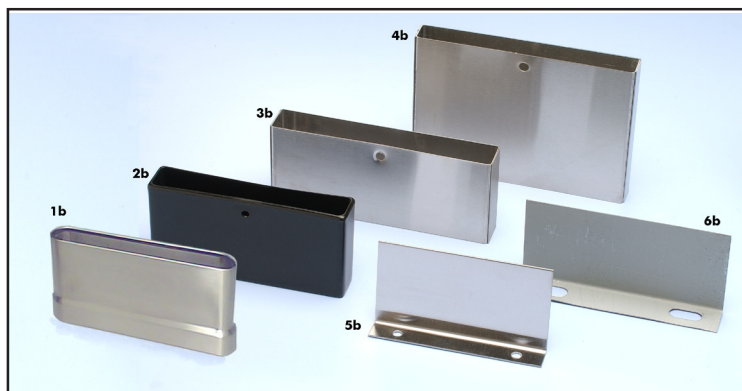
- Durable Material
- Good Moisture Resistance
- Repairability
- Anti-Microbial
- Fire Rating Class A

Brackets



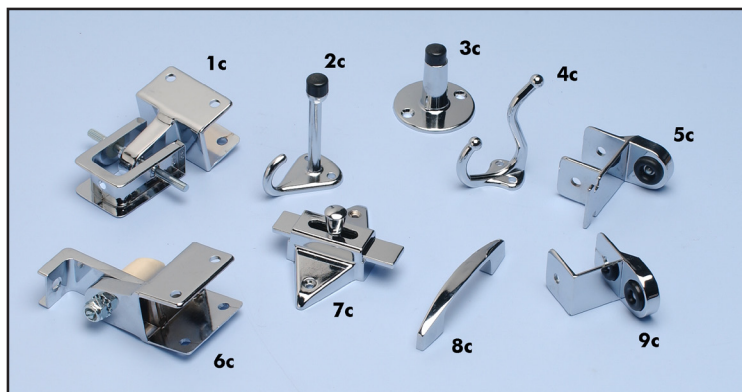
ITEM #	DESCRIPTION
1a	Stamped Stainless Steel U Bracket available in 1/2", 3/4", 7/8" and 1"
2a	Stamped Stainless Steel T Bracket available 1/2", 3/4", 7/8" and 1"
3a	Stamped Stainless Steel F Bracket available in 1/2", 3/4", 7/8", 1" and 1 1/4"
4a	Aluminum U Bracket, available in 1" and 1/2"
5a	Aluminum T Bracket, available in 1" and 1/2"
6a	Aluminum F Bracket, available in 1" and 1 1/4"
7a	Zamac U Bracket available in 7/8" and 1"
8a	Zamac T Bracket available in 7/8" and 1" and 1 1/4"
9a	Zamac F Bracket 7/8", 1" and 1 1/4"

Shoes



ITEM #	DESCRIPTION
1b	Stainless Steel shoe for Baked Enamel and Stainless Steel
2b	Plastic vinyl shoe for Solid Plastic available in 1" X 3"H
3b	Stainless Steel shoe 3"H available in 3/4", 1" and 1 1/4"
4b	Stainless Steel shoe 5"H available in 3/4" and 1"
5b	L Plate available in 3/4"
6b	L Plate available in 1 1/4"

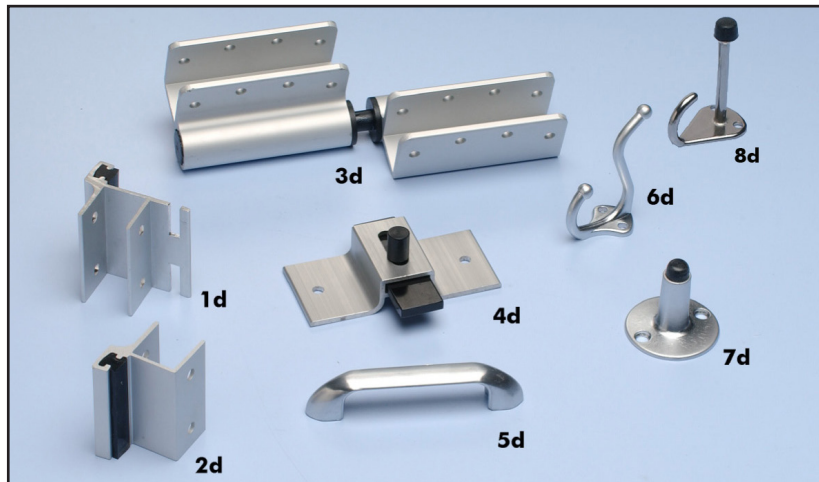
Cast Chrome Plated Zamac Door Pack for High Pressure Laminate Compartments



ITEM #	DESCRIPTION
1c	Top Adjustable Hinge Set
2c	Inswing Door Hook and Bumper
3c	Outswing Door Stop
4c	Outswing Door Hook
5c	Inswing Keeper
6c	Bottom Adjustable Hinge Set
7c	Outswing and Inswing Slide Latch
8c	Outswing Door Pull
9c	Outswing Keeper

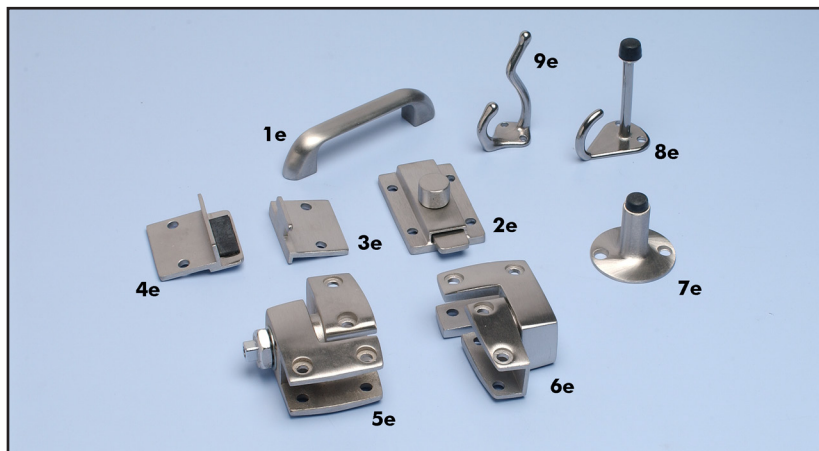
HARDWARE

Clear Satin Anodized Aluminum Door Pack for Solid Plastic (HDPE) Compartments



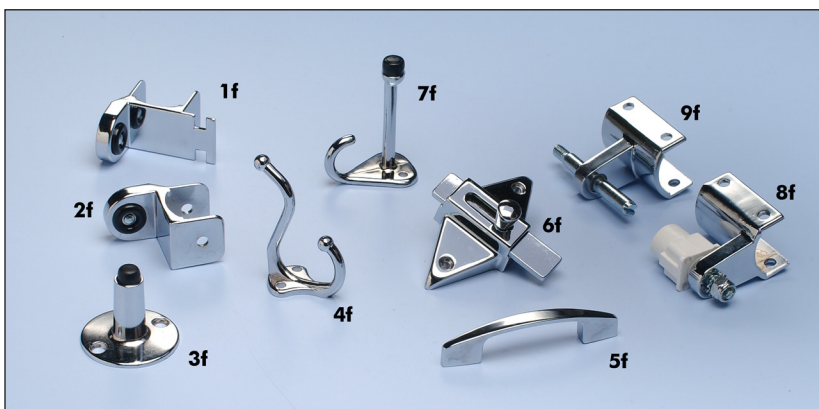
ITEM #	DESCRIPTION
1d	Inswing Keeper (Strike and Keeper)
2d	Outswing Keeper (Strike and Keeper)
3d	8" RH or LH adjustable hinge set
4d	Inswing and Outswing Slide Latch
5d	Outswing Door Pull (Satin Chrome Zamac)
6d	Outswing Door Hook (Satin Chrome Zamac)
7d	Outswing Door Stop (Satin Chrome Zamac)
8d	Inswing Door Hook and Bumper (Satin Chrome Zamac)

Stainless Steel Door Pack for Phenolic Core Compartments



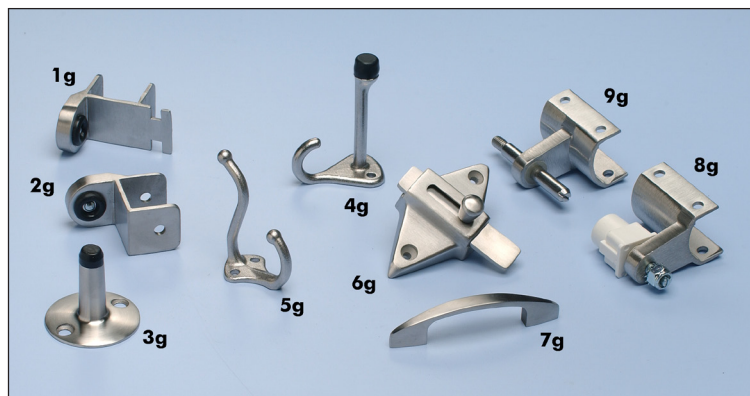
ITEM #	DESCRIPTION
1e	Outswing Door Pull
2e	Inswing and Outswing Slide Latch
3e	Inswing Keeper
4e	Inswing Strike/Outswing Strike and Keeper
5e	Bottom Adjustable Hinge
6e	Top Adjustable Hinge
7e	Outswing Door Stop
8e	Inswing Door Hook and Bumper
9e	Outswing Door Hook

Cast Chrome Plated Zamac Door Pack for Stainless Steel and Baked Enamel Compartments



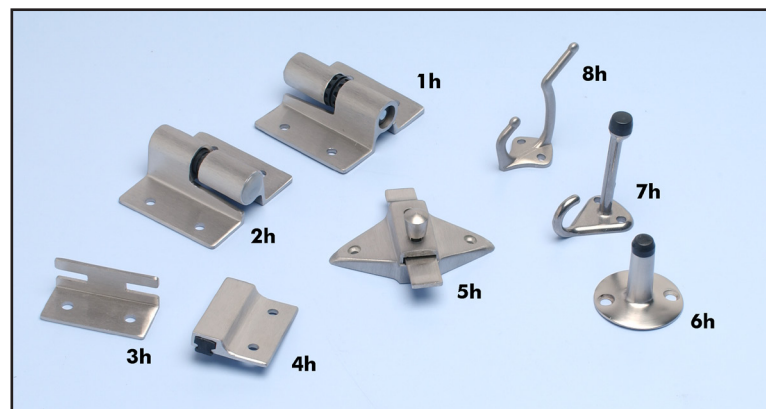
ITEM #	DESCRIPTION
1f	Inswing Keeper
2f	Outswing Keeper
3f	Outswing Door Stop
4f	Outswing Door Hook
5f	Outswing Door Pull
6f	Inswing and Outswing Slide Latch
7f	Inswing Door Hook and Bumper
8f	Bottom Adjustable Hinge Set
9f	Top Adjustable Hinge Set

Stainless Steel Door Pack for Stainless Steel and Baked Enamel Compartments



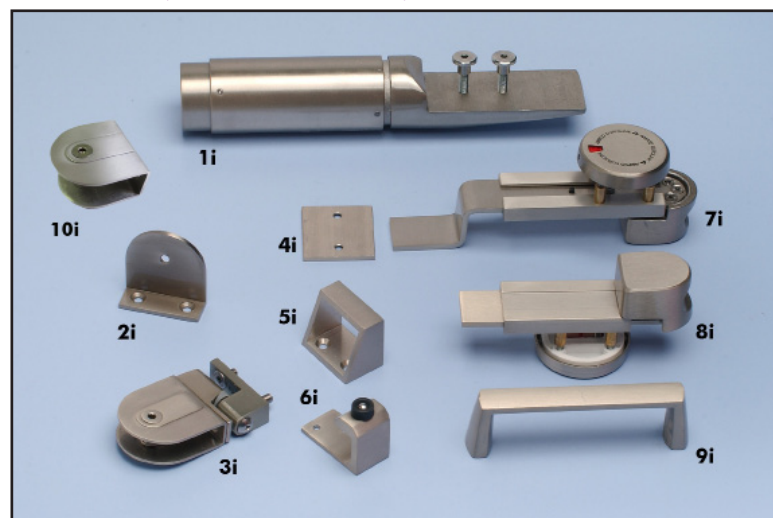
ITEM #	DESCRIPTION
1g	Inswing Keeper
2g	Outswing Keeper
3g	Outswing Door Stop
4g	Inswing Door Hook and Bumper
5g	Outswing Door Hook
6g	Inswing and Outswing Slide Latch
7g	Outswing Door Pull
8g	Bottom Adjustable Hinge Set
9g	Top Adjustable Hinge Set

Stainless Steel Door Pack for Solid Surface Compartments



ITEM #	DESCRIPTION
1h	Surface Mounted Adjustable Hinge Top
2h	Surface Mounted Adjustable Hinge Bottom
3h	Inswing Keeper Split Emergency
4h	Outswing/Inswing Keeper Split Bumper
5h	Inswing and Outswing Slide Latch
6h	Outswing Door Stop
7h	Inswing Door Hook and Bumper
8h	Outswing Door Hook

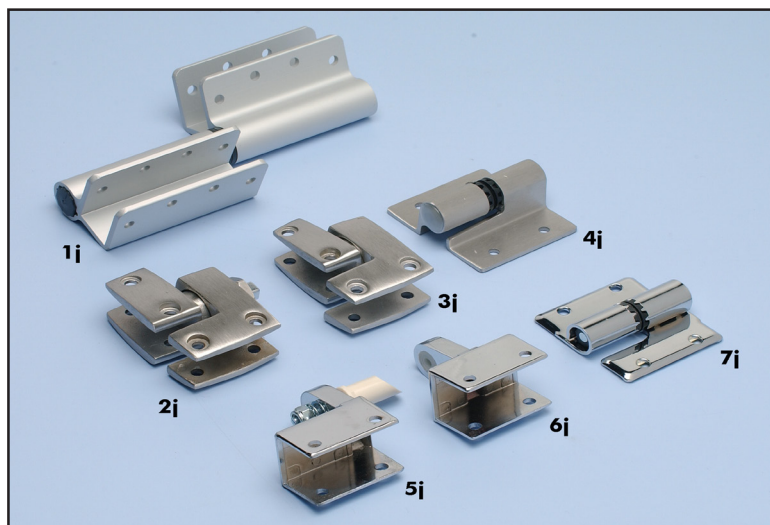
Euroline (No Sight Line) Hardware Aluminum with Stainless Steel Finish



ITEM #	DESCRIPTION
1i	Pedestal Stainless Steel Finished Aluminum available in 3/4" and 7/8" pilasters
2i	Stainless Steel Finished Aluminum L Bracket available in 1/2" and 3/4"
3i	Stainless Steel Finished Aluminum Hinge available in 1/2" and 3/4" Three (3) per door
4i	Outswing Keeper
5i	Inswing Keeper
6i	Inswing Door Hook
7i	Outswing Slide Latch with occupancy indicator Finished Aluminum
8i	Inswing Slide Latch Finished Aluminum with occupancy indicator
9i	Outswing Door Pull Finished aluminum
10i	U Bracket for 7/8", 3/4" and 1/2"

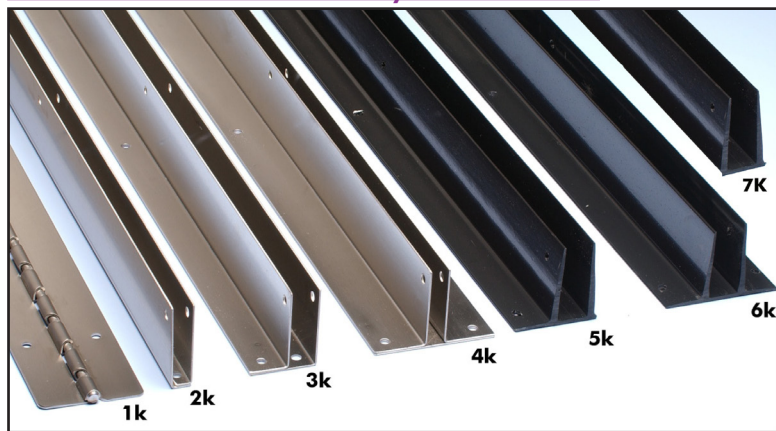
Hardware

Hinges



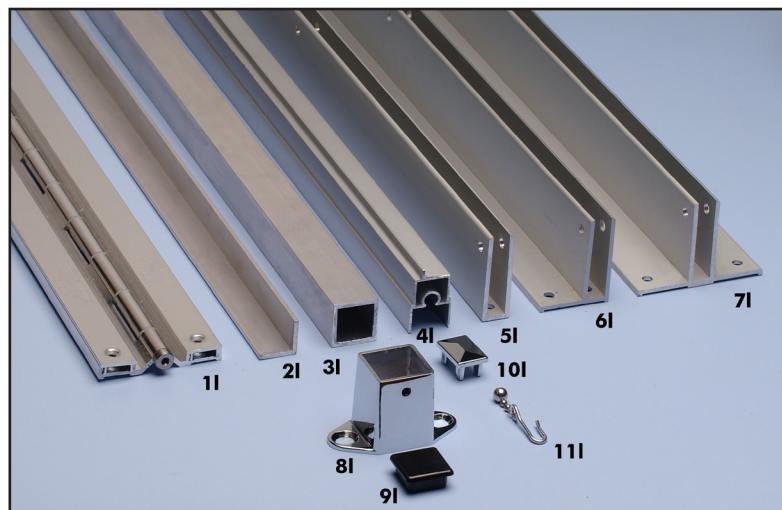
ITEM #	DESCRIPTION
1j	Satin Anodized Aluminum Hinge for Solid Plastic 8" RH or LH
2j	Bottom Bracket Hinge Stainless Steel for Phenolic and Evergreen
3j	Top Hinge Stainless Steel for Phenolic and Evergreen
4j	Surface Mounted Hinge, cast stainless steel
5j	Zamac Bottom Door Hinge for HPL
6j	Zamac Top Door Hinge for HPL
7j	Brass Surface Mounted Hinge

Stainless Steel and Vinyl Hardware



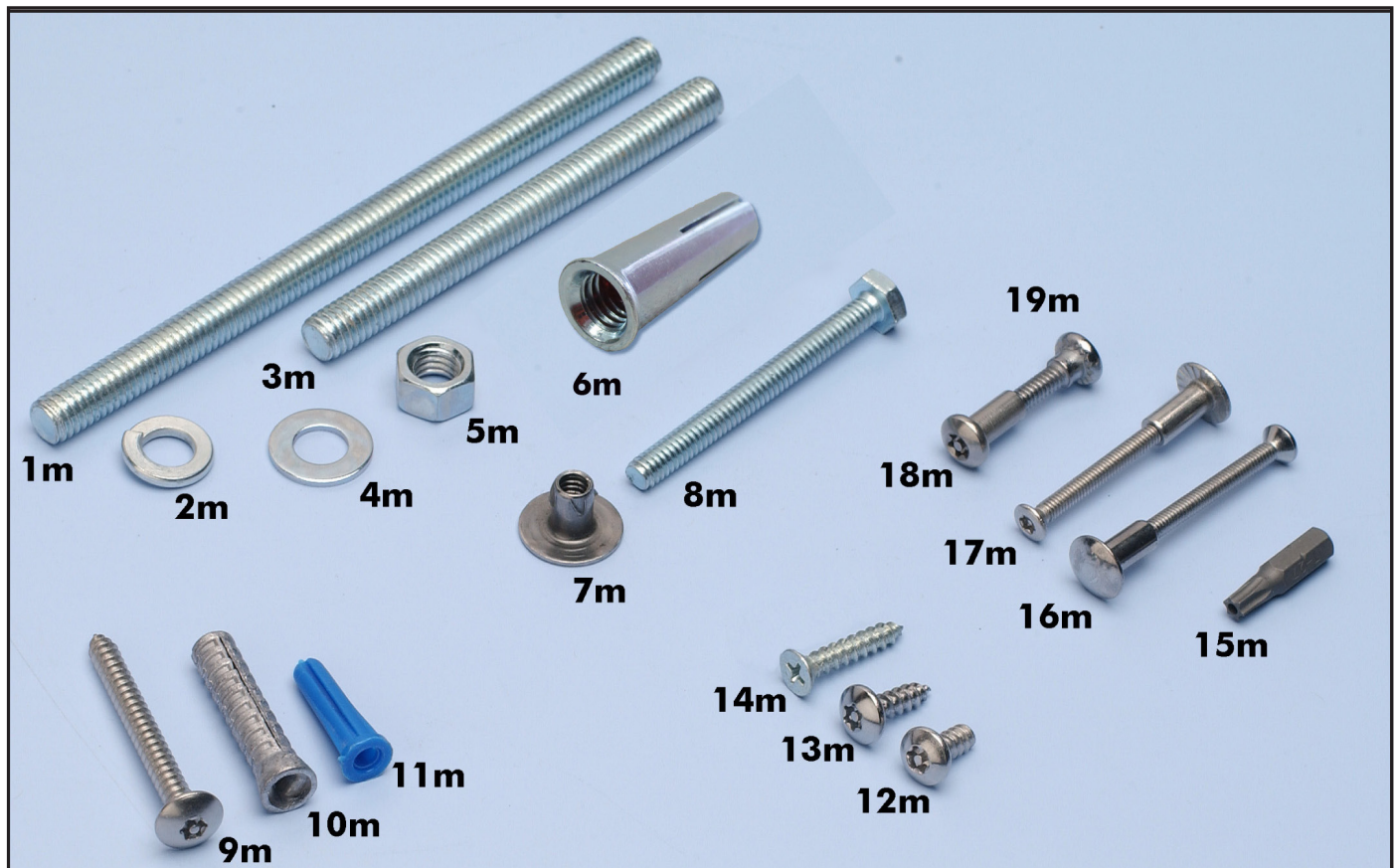
ITEM #	DESCRIPTION
1k	Inswing and Outswing Stainless Steel Continuous Camed Hinge 54", with 0° or 20° cam hinge
2k	U Bracket available in 1/2", 3/4" and 1" by 54 1/2"
3k	F Bracket available in 1/2", 3/4", 1" and 1 1/4" by 54 1/2"
4k	T Bracket available in 1/2", 3/4" and 1" by 54 1/2"
5k	F Bracket Vinyl Plastic 1" x 54"
6k	T Bracket Vinyl Plastic 1" x 54"
7k	U Bracket Vinyl Plastic 1" x 54"

Aluminum Miscellaneous Hardware



ITEM #	DESCRIPTION
1l	Aluminum Continuous Adjustable Spring Tension Hinge 54" with cover plates
2l	Angles available in 1 1/2"
3l	Square Tube 1 1/4"
4l	Length Headrail available in 3/4", 1" and 1 1/4"
5l	U Bracket available in 1/2", 3/4" and 1" by 54 1/2"
6l	F Bracket available in 1/2", 3/4", 1" and 1 1/4" by 54 1/2"
7l	T Bracket available in 1/2", 3/4" and 1" by 54 1/2"
8l	Post Shoe 1 1/4" Chrome
9l	1 1/4" Post End Cap
10l	End plug for HeadRail available in 3/4", 1" and 1 1/4"
11l	Chrome Bead Hook (for showers)

Fasteners



Item #	Description	Item Code
Ceiling Hung		
1m	Threaded Rod	439-87405
2m	Washer	439-CH WASHER
5m	Nut	439-TR NUT
Floor Mounted		
3m	Threaded Rod	439-87435
4m	Washer	439-WASHER 5/16
5m	Nut	439-TR NUT
6m	Rawl (Drop in Anchor)	439-RAWL
7m	Nut Pro	439-T NUT PRO
8m	Tap	439-TAP 1-4

Item #	Description	Phenolic Core		Aluminum	High Pressure Laminate			Chrome Plated Zamac		
		1/2"	3/4"	1"	7/8"	1"	1-1/4"	1"	7/8"	1-1/4"
9m	#12 x2" Anchor Screw	439-92020						439-91913		
10m	Lead Anchors	439-9117						439-9117		
11m	Plastic Anchors	439-9106						439-9106		
12m	#12 x7/16" SS Blunt Pt. Screw	439-91530								
13m	#10 x1" SS Tap Screw	N/A	N/A		439-90969			439-91064		
14m	#10 x1" SS Tap/Phillip Screw	N/A	N/A		439-91154 (ss six lobe)			439-91114 (Phillips)		
15m	Security Six Lobe Drive Bit	439- T20 / 439-T27								
16m	#8-32 Unslotted Barrel Nut	439-9870						439-9864		
17m	#8-32 Six Lobe Oval head	N/A	439-88430	439-88289	N/A	439-88440	439-88464	439-88440		439-88464
18m	#10-24 Barrel Nut	439-88310	439-88310	439-88320		439-88320		439-88314		
19m	#10-24 Shoulder Screw	439-88330	439-88350 439-88340	439-88360	439-88350	439-88360 439-88390		439-88364	439-88344	439-88364

CLEAN AND CARE

High Pressure Decorative Laminate

Laminate surfaces can be cleaned with a mild liquid soap or an all-purpose cleaner. Be sure to wipe and dry the finish after cleaning. Do not hose down or wet down high-pressure laminate partition systems. Do not use abrasive cleaners, rough scouring pads or steel wool to clean laminate surfaces. Acid and alkaline based solutions such as drain cleaners, chlorine bleach and metal cleaners will permanently damage laminates and should not be allowed to come into contact with laminate surfaces. Accidental spills should be wiped and entire area rinsed immediately after the spill occurs.

Although laminate surfaces are extremely durable, you may want to add some extra protection. Use self-cleaning waxes available at your local supermarket to provide a protective film on laminate clad surfaces. These products are gentle and if used according to the directions on the package, can be used regularly with no need for stripping.

While laminate surfaces are impervious to normal wear and tear, they can be damaged if they are subjected to extraordinary abuse. Gouging can result in scratching and cracking. Sliding sharp objects across laminate surfaces may cause accelerated wear and scratching.

Cleaning the Surface

Matte and Suede Finishes - Use a soft damp cloth with mild liquid soap or all-purpose cleaner.

Textured Finishes - Use a nylon scrub brush with all-purpose cleaner or mild liquid detergent diluted with water. Rinse with water and wipe with a soft dry cloth.

High-Gloss Finishes - Use a soft damp cloth with mild liquid soap or an all-purpose cleaner. Use a mild glass cleaner with a soft dry cloth to eliminate any additional smears and streaks.

Certain substances require special cleaning techniques and materials. Here are recommendations for the most common problems:

Residual Glue - Use a soft dry cloth with an adhesive solvent.

Paint and varnish - Use a soft dry cloth and a solvent or paint remover to remove oil-based paint and

varnish. Water based paints can be removed with glass cleaner or paint remover on a soft dry cloth.

Stains - Laminate surfaces will resist most stains, however some substances can cause permanent or semi-permanent discoloring. The visual impact or stains caused by hair dyes, laundry blueing, and pharmaceutical compounds can be reduced by blotting the area quickly with a soft dry cloth slightly dampened with diluted chlorine bleach. Afterwards, immediately rinse the area with water to remove any remaining bleach.

Discoloration from wood stains, indelible ink, or newsprint can be faded by applying full strength Pine Sol liquid cleaner or mild all-purpose stain cleaner. Allow the cleaner to draw out the stain for a few minutes, then blot with a soft cloth and rinse with water.

Solid Plastic Polyethylene

To clean solid plastic toilet partitions, use a mild liquid soap and a damp cloth. Wipe and dry the surfaces to remove most dirt and stains. Gentle cleaning solvents may be used on solid plastic material, such as solutions containing ammonia or 12% bleach; however, be careful not to apply cleaning solvents to the toilet partition hardware, as this will degrade the finish and functionality of the hardware and moving parts over time. Do not use abrasive powders, scouring pads or solutions containing acids, lye or enzymes as these materials may damage the finish and leave unsightly marks on the material.

Solid Phenolic Core

Follow the above guidelines for high pressure laminate as the decorative surface should be treated the same. However, because phenolic systems have a solid water resistant core, these systems can be exposed to water. You may hose down a phenolic system, if necessary. Do not use abrasive cleaners, rough scouring pads or steel wool to clean laminate surfaces.

Powder Coated Baked Enamel Steel

Use a mild liquid soap to clean metal partitions. Be sure to wipe and dry the finish after cleaning. Do not hose down or wet down steel partition systems.

CLEAN AND CARE

Do not use abrasive cleaners, rough scouring pads or steel wool to clean surfaces. Keep away from acids, cleaners and stains.

Stainless Steel

Stainless steel is generally corrosion resistant and will last for many years if properly maintained.

A common misconception is that stainless steel will not rust. If exposed to highly corrosive materials for prolonged periods, stainless steel may experience some degree of corrosion. Handle stainless steel with clean gloves or cloths to guard against stainless or finger marks.

Stainless steels need to be cleaned for aesthetic considerations and to preserve corrosion resistance. Where possible, all surfaces should be cleaned with mild liquid soap only. The finish should then be wiped dry. Any stainless steel surface will benefit from frequent cleaning.

On polished surfaces always rub or wipe in the direction of the polish or grain lines, not across them.

In areas containing showers, either self-contained or tiled in units, the stainless steel partition surfaces must receive ventilation from outside so that excess humidity can escape.

Cleaning the Surface

Clean your stainless steel partitions with any oil based stainless steel cleaner on the market. Do not use non-oil based cleaners, since these tend to leave an unattractive film on the surface. Carefully remove excess cleaner so that the oil does not attract dirt and dust. Wipe the surface with the grain of the material to avoid scratching the surface.

Solid Surface

Routine Care

Soapy water or ammonia-based cleaners will remove most dirt and stains from all types of solid surface. Be careful not to apply cleaning solvents to the toilet partition hardware, as this will degrade the finish and functionality of the hardware and moving parts over time.

Removing Stains and Fixing Scratches

Nicks, scratches and cuts are inevitable with any high-use product, including solid surface. But because the material is solid, it is easy to renew to its original appearance as described below.

Minor damage, including scratches, general or chemical stains, scorchs or burns, and minor impact marks, can be repaired on-site with a light abrasive cleanser and a product such as a green Scotch-Brite® pad.

For heavier damage, light sanding may be necessary. The following steps should be followed:

Identify the extent of the damage and ascertain whether a minor repair will solve the problem. If the damage is minor, try to repair it with an abrasive cleanser or a product such as a Scotch-Brite® pad. If the above step is unsuccessful, hand-sand with 400-grit wet and dry paper. To minimize dust, wet the surface before starting. If this is unsuccessful, use an electric sander and heavier-grit paper. Always make provisions to control dust. If this, too, is unsuccessful, you may need to consult a professional for other repair options.





LEED CERTIFICATION



OUR RESPONSIBILITY

At AMPCO®, we know it's our responsibility to promote sustainable building products. We are committed to protecting our natural resources. As part of our effort to support conservation and green buildings, we would like to provide the architects, designers, builders and owners with relevant information about our products. We are dedicated to ongoing awareness and committed to exploring new sustainable solutions for our industry, the community and our future.

INTRODUCTION

Buildings fundamentally impact people's lives and the health of the planet. In the United States, buildings use one-third of our total energy, two-thirds of our electricity, one-eighth of our water, and transform land that provides valuable ecological resources. Since the LEED Green Building Rating System for New Construction was first published in 1999, it has been helping professionals across the country to improve the quality of our buildings and their impact on the environment. As the green building sector grows exponentially, more and more building professionals, owners, and operators are seeing the benefits of green building and LEED certification. Green design not only makes a positive impact on public health and the environment, it also reduces operating costs, enhances building and organizational marketability, potentially increases occupant productivity, and helps create a sustainable community.

WHAT IS LEED?

The Leadership in Energy and Environmental Design (LEED) Green Building Rating System™ encourages and accelerates global adoption of sustainable green building and development practices through the creation and implementation of universally understood and accepted tools and performance criteria. LEED is a third-party certification program and the nationally accepted benchmark for the design, construction and operation of high performance green buildings. LEED promotes a whole-building approach to sustainability by recognizing performances in five key areas of human and environmental health: sustainable site development, water savings, energy efficiency, materials selection and indoor environmental quality.

WHY CERTIFY?

AMPCO offers a wide range of products that contribute to the LEED certification program.

- Be recognized for your commitment to environmental issues in your community, your organization (including stockholders), and your industry
- Receive third party validation of achievement
- Qualify for a growing array of state & local government initiatives
- Receive marketing exposure through USGBC Web site, Greenbuild conference, case studies, and media announcements



LEED CERTIFICATION

HIGH PRESSURE LAMINATE

RECYCLED CONTENT MR 4.0 (1-2 points)	Pre-Consumer: Formica 71% Wilsonart 71%	Post-Consumer: Formica 2% Wilsonart 5%	Total Recycled Content Formica 73% Wilsonart 76%
LOCAL AND REGIONAL MATERIALS MR 5.0 (1-2 points)	Manufactured: Miami, FL Sanger, TX Auburn, WA		
RENEWABLE RESOURCES MR 6.0 (1 point)	Wilsonart		
LOW EMITTING MATERIAL IEQ 4.4 (1 point)	Yes		

PHENOLIC CORE AND EVERGREEN (COLOR THROUGH)

RECYCLED CONTENT MR 4.0 (1-2 points)	Pre-Consumer: Formica/Evergreen*A 10% Wilsonart/Evergreen*B 7% Evergreen*C 10%	Post-Consumer: Formica/Evergreen*A 5% Wilsonart/Evergreen*B 22% Evergreen C 15%	Total Recycled Content Formica/Evergreen*A 15% Wilsonart/Evergreen*B 29% Evergreen*C 25%
LOCAL AND REGIONAL MATERIALS MR 5.0 (1-2 points)	Manufactured: Miami, FL (All Phenolic, Evergreen *A and *B) Sanger, TX (Phenolic Only) Auburn, WA (Phenolic Only)		
RENEWABLE RESOURCES MR 6.0 (1 point)	Wilsonart		
LOW EMITTING MATERIAL IEQ 4.4 (1 point)	Yes		

SOLID PLASTIC (HDPE)

CONSTRUCTION WASTE MANAGEMENT MR 2.0 (1 point)	Yes		
RECYCLED CONTENT MR 4.0 (1-2 points)	Pre-Consumer: Standard 25% 100 % PCR : 36%	Post-Consumer: Standard 0% 100 % PCR : 54%	Total Recycled Content Standard 25% 100% PCR 100%
LOCAL AND REGIONAL MATERIALS MR 5.0 (1-2 points)	Manufactured: Miami, FL Sanger, TX Auburn, WA		

POWDER COATED STEEL

CONSTRUCTION WASTE MANAGEMENT MR 2.0 (1 point)	Yes		
RECYCLED CONTENT MR 4.0 (1-2 points)	Pre-Consumer: 30%	Post-Consumer: 49%	Total Recycled Content 79%
LOCAL AND REGIONAL MATERIALS MR 5.0 (1-2 points)	Manufactured: Sanger, TX		
LOW EMITTING MATERIAL IEQ 4.4 (1 point)	Yes		



LEED CERTIFICATION

STAINLESS STEEL

CONSTRUCTION WASTE MANAGEMENT MR 2.0 (1 point)	Yes		
RECYCLED CONTENT MR 4.0 (1-2 points)	Pre-Consumer: 30%	Post-Consumer: 49%	Total Recycled Content 70%
LOCAL AND REGIONAL MATERIALS MR 5.0 (1-2 points)	Manufactured: Sanger, TX		
LOW EMITTING MATERIAL IEQ 4.4 (1 point)	Yes		

SOLID SURFACE

CONSTRUCTION WASTE MANAGEMENT MR 3.0 (1 point)	Yes		
MATERIAL REUSE MR 2.0 (1 point)	Yes		
RECYCLED CONTENT MR 4.0 (1-2 points)	Pre-Consumer: Standard 10% Formica 5% Corian 10%	Post-Consumer: Standard 3% Formica 3% Corian 3%	Total Recycled Content Standard 13% Formica 8% Corian 13%
LOCAL AND REGIONAL MATERIALS MR 5.0 (1-2 points)	Manufactured: Miami, FL and Auburn, WA		

NOTES:

- High Pressure Laminate Partitions are assembled with three materials: 75% Particleboard, 15% Laminate and 10% Zamac Hardware
- EQ 4.4 Credit only complies if no added formaldehyde resin is used in particleboard which is available ONLY UPON REQUEST and may carry an upcharge.
- Compact Laminate (Phenolic) and Evergreen Partitions are assembled with two materials: 85% phenolic core and 15% Stainless Steel Hardware.
- Compact Laminate (Phenolic) with ABS edging Partitions are assembled with three materials: 84% Compact Laminate (Phenolic), 15% Stainless Steel Hardware and 1% ABS tape.
- Standard Solid Plastic (HDPE) recycled content only applies for: Solid colors only.
- 100% Post-Consumer Solid Plastic is available ONLY UPON REQUEST and may carry an upcharge. Check with Factory for color availability.
- Evergreen A includes Slate and Ebony.
- Evergreen B includes Allspice. For other color information please contact marketing department.
- Evergreen C includes Cinnamon, Ginger, Nutmeg and Pumpkin Spice.
- All Calculations include standard hardware. For specific hardware calculations please contact the Marketing Department at marketing@ampco.com
- Baked Enamel Partitions are assembled with three materials: 85% Galvanized Steel, 5% Honeycomb and 10% Zamac Hardware
- Stainless Steel Partitions are assembled with three materials: 85% Stainless Steel, 5% Honeycomb and 10% Zamac Hardware.
- Solid Surface Partitions are assembled with two materials: 90% Solid Surface and 10% Stainless Steel Hardware.

*All calculations include standard hardware. For specific hardware calculations please contact the Marketing Department at marketing@ampco.com

*Due to constant updates on information provided to us by our vendors, please check our website to confirm the latest information about our products and LEED.

*For information visit our website at www.ampco.com or email us at info@ampco.com. You can also visit www.usgbc.org for LEED Credit Certification or www.usgbc.org for information on LEED Credit Certification.

NOTE FROM AMPCO

AMPCO has reviewed the information in this catalog thoroughly. Though, we believe the information in this catalog is accurate, we cannot take responsibility for typographical errors or information that has changed since the printing of this catalog. AMPCO Products strongly recommends that final selections of material be made with actual samples. Please confirm measurements, color selections, product availability and contact information with your Ampco representative. AMPCO provides no warranty, expressed or implied, as to the accuracy, reliability or completeness of furnished data. All content, data and images, are property of AMPCO Products, LLC unless otherwise stated. Any use of this content without the prior written authorization by AMPCO Products, LLC is strictly prohibited.

FLORIDA	11400 NW 36th Ave, Miami, FL 33167	305.821.5700	florida@ampco.com
TEXAS	220 Rail Road, Sanger, TX 76266	940.458.7401	texas@ampco.com
WASHINGTON	4520 B Steet, Ste B, Auburn, WA 98001	253.852.5900	washington@ampco.com

